

KÖNIG-MTM SUPPLIES CONSTRUCTION EQUIPMENT MANUFACTURE WITH HIGH-PRECISION CLAMPING DEVICES

As a premium manufacturer of high-precision clamping devices for modern CNC-controlled machine tools, König-mtm also has a wide range of innovative clamping elements to offer the international market. Customers workpieces machined on these precision products range from aircraft components to components for automobiles and construction machinery to gears for wind turbines. Read in this article how the company consults and supplies customers from the construction machinery sector.

Tight schedules, high precision and increasing quality requirements are no longer unknown terms in the construction machinery sector. As a supplier to this industry, we are also exposed to these challenges. A well-known manufacturer of construction machinery in this sector contacted our Swedish representative (GL Maskin & Verktug AB) and was searching for a clamping solution for the machining of brake discs.

„high precision machining“

The demands of components from the construction machinery sector are similar to those of automotive industry, which König-mtm has been successfully supplying for many years. The primary difference, and slight challenge is that the workpieces to be clamped are usually significantly larger and consequently heavier. Through local support by our representative GL Maskin & Verktug AB and our technical application engineer Alexander Lutz, who is responsible for Sweden, the customer's task was discussed in more detail and an effective

solution for the clamping – with the goal of high precision machining – was identified.

König-mtm was able to provide a complete package for the high-precision clamping on a German machine manufacturer's machining center. The workpiece is centered and clamped with a mechanical collet mandrel. This is adapted to a CNC-tombstone specially provided by König-mtm. To avoid having to reconnect and disconnect the oil lines every time the clamping device is changed, an intermediate flange was flanged between the tombstone and the Königdorn®, which remains mounted when the

clamping device is changed and also enables a time-saving change.

„enables a time-saving change“

Even with this challenging clamping principle and size, König-mtm guarantees a corresponding positioning accuracy in order to be able to produce the components in highly accurate and repeatable quality. If this article has peaked your interest, please take a look at our website or contact our technical application engineers directly.

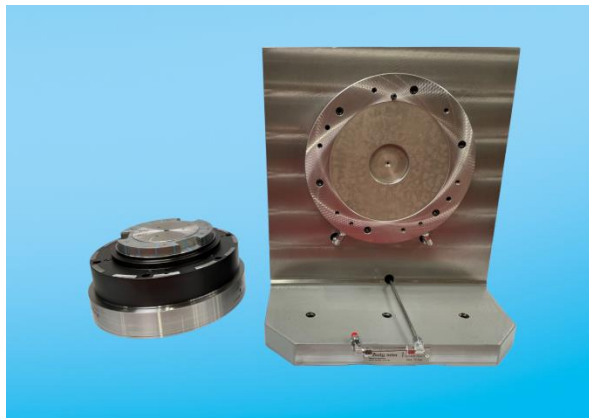


Illustration 1: Königdorn® next to the CNC-tombstone

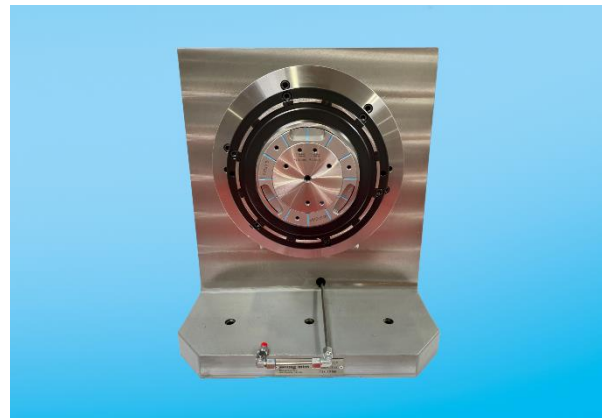


Illustration 2: Königdorn® in assembled condition

Our application engineers are available for you and will be happy to advise you.



Kempf, Jürgen

Head of Application Engineering and Sales

📞 +49(0)9342876-290

✉️ kempf@koenig-mtm.de



Lutz, Alexander

Technical Application Engineer

📞 +49(0)9342876-240

✉️ alexander.lutz@koenig-mtm.de



Breunig, Thomas

Technical Application Engineer

📞 +49(0)9342876-185

✉️ breunig@koenig-mtm.de



Münch, Tobias

Technical Application Engineer

📞 +49(0)9342876-164

✉️ muench@koenig-mtm.de