

---

## KÖNIG-MTM SLIDING BLOCK MANDREL

---

*The AMB - International Exhibition for Metalworking - has established itself as the leading trade show in the even years. It takes a top position among the trade fairs in the industry and is one of the top five worldwide. This year König-mtm GmbH will again exhibit its clamping technology in Stuttgart and inform attendees about news and the possibilities of hydraulic and mechanical clamping technology, in addition to intelligent quick change clamping systems. Visit us at our booth in hall 3 booth D01 where you can now see our sliding block mandrel.*

### **High precision sliding block mandrel**

The high-precision sliding block mandrel for example is used for clamping shafts, where the center forms the basis for further machining steps. The clamping principle is similar to the clamping between centers, whereby additional torque is transmitted by the sliding blocks that are in contact with the inner diameter of the workpiece. König-mtm guarantees a concentricity of up to 0.003 mm between centers and a compensating torque transmission in the bore. This makes the Königdmorn® ideal for grinding operations, but milling or turning operations are also no challenge.

### **Product benefits**

- High expansion
- Large tolerance range coverable
- High concentricity
- Steady tensioning
- Compatible with automated loading device
- High wear resistance
- Easy handling
- Low maintenance
- All clamping zones are actuated separately from each other

## Clamping principle

The workpiece center is aligned by the centers during loading. Through the operation of the drawbar, the sliding blocks mounted in an even pitch - guided over the taper - are pushed outwards. The sliding blocks are pushed against the bore contour of the workpiece and thus generate the transmission of the torque. Clamping of long workpieces over several clamping zones is also possible with this clamping principle. The clamping zones can also be actuated separately from each other.

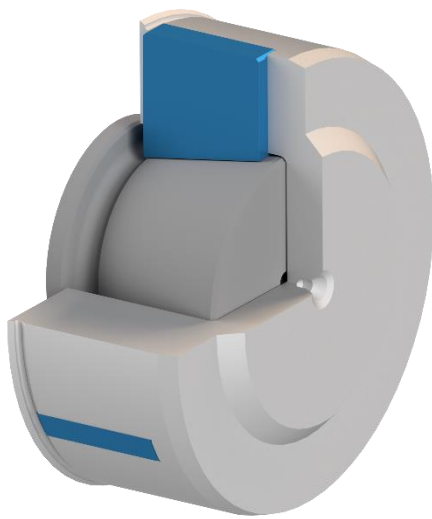


Illustration 1: partial section "unclamped condition"

## Special design

As usual, the mandrels are tailor-made according to individual customer requirements and can be fitted to almost every machine connection of modern precision machines. Due to our special production processes, we can react directly to the requirements of our customers, therefore providing customization options for this type of clamping device such as workpiece system control, quick-change capability, multiple clamping, compressed air etc. are all possible.

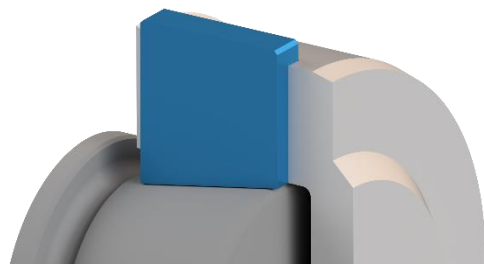


Illustration 2: partial section "clamping condition"

Our application engineers are available for you and will be happy to advise you.



**Kempf, Jürgen**  
Head of Application Engineering  
and Sales  
☎ +49(0)9342876-290  
✉ [kempf@koenig-mtm.de](mailto:kempf@koenig-mtm.de)



**Lutz, Alexander**  
Technical Application Engineer  
☎ +49(0)9342876-240  
✉ [alexander.lutz@koenig-mtm.de](mailto:alexander.lutz@koenig-mtm.de)



**Breunig, Thomas**  
Technical Application Engineer  
☎ +49(0)9342876-185  
✉ [breunig@koenig-mtm.de](mailto:breunig@koenig-mtm.de)



**Münch, Tobias**  
Technical Application Engineer  
☎ +49(0)9342876-164  
✉ [muench@koenig-mtm.de](mailto:muench@koenig-mtm.de)